

||| MERAAS



THE EDIT AT 



A LEADING MASTER DEVELOPER

From Bluewaters Residences to the BVLGARI Residences, Meraas creates exclusive, design-led, limited-edition homes in landmark locations, merging innovation with artistry to shape refined living experiences. Every project is defined by its unique setting where elegance, tranquillity and community life flow together.

Where creativity

Dubai Design District (d3) is a unique lifestyle destination blending art, design, fashion, and innovation. Set near Downtown Dubai and offering a rich combination of living, working and cultural spaces, with waterfront views, walkable streets and curated experiences, d3 is designed to inspire creativity and connect a global creative community.



DUBAI
DESIGN
DISTRICT
d3

An elegant, timeless presence



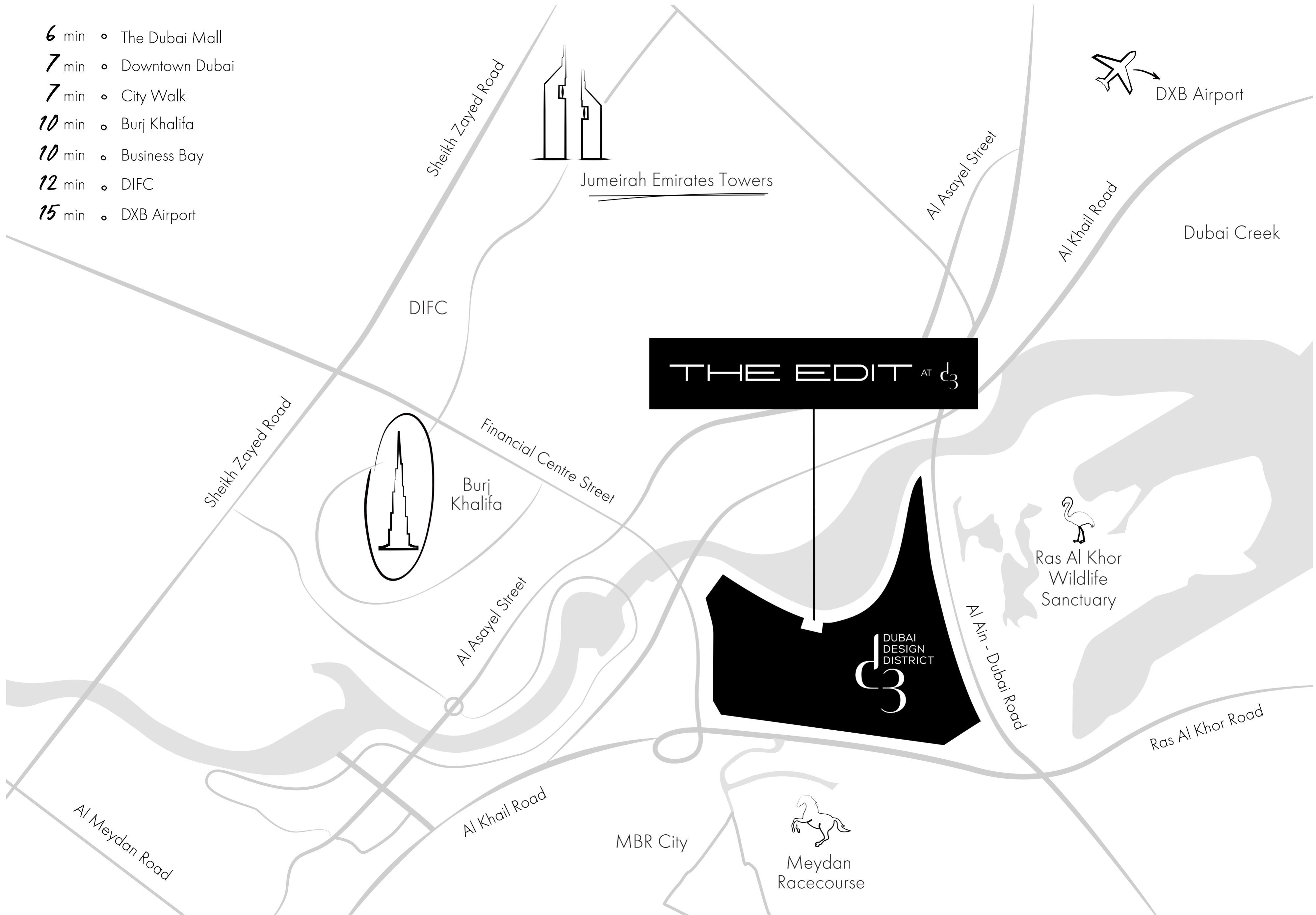
shaped by design and inspired by nature

Home is where the art lives

As the region's first and largest design district, d3 is home to a global collective of leading names in design, art, and fashion. More than a location, d3 is a platform for bold ideas and boundary-pushing innovation, where beautifully crafted spaces and an elevated community unlock new perspectives and transform the everyday into the extraordinary.



- 6** min • The Dubai Mall
- 7** min • Downtown Dubai
- 7** min • City Walk
- 10** min • Burj Khalifa
- 10** min • Business Bay
- 12** min • DIFC
- 15** min • DXB Airport



New perspectives await

Discover breathtaking views and myriad new ways to see the world, across 18 million square feet of space designed to nurture creativity, connection and progress.





DESIGN HQ

THE MINDSPACE

SOHO

THE SANCTUARY

THE CREEKSIDE

Discover five unique areas

d3 is composed of five distinct areas, each one offering a different experience inspired by its environment, space, views and the people who call it home.

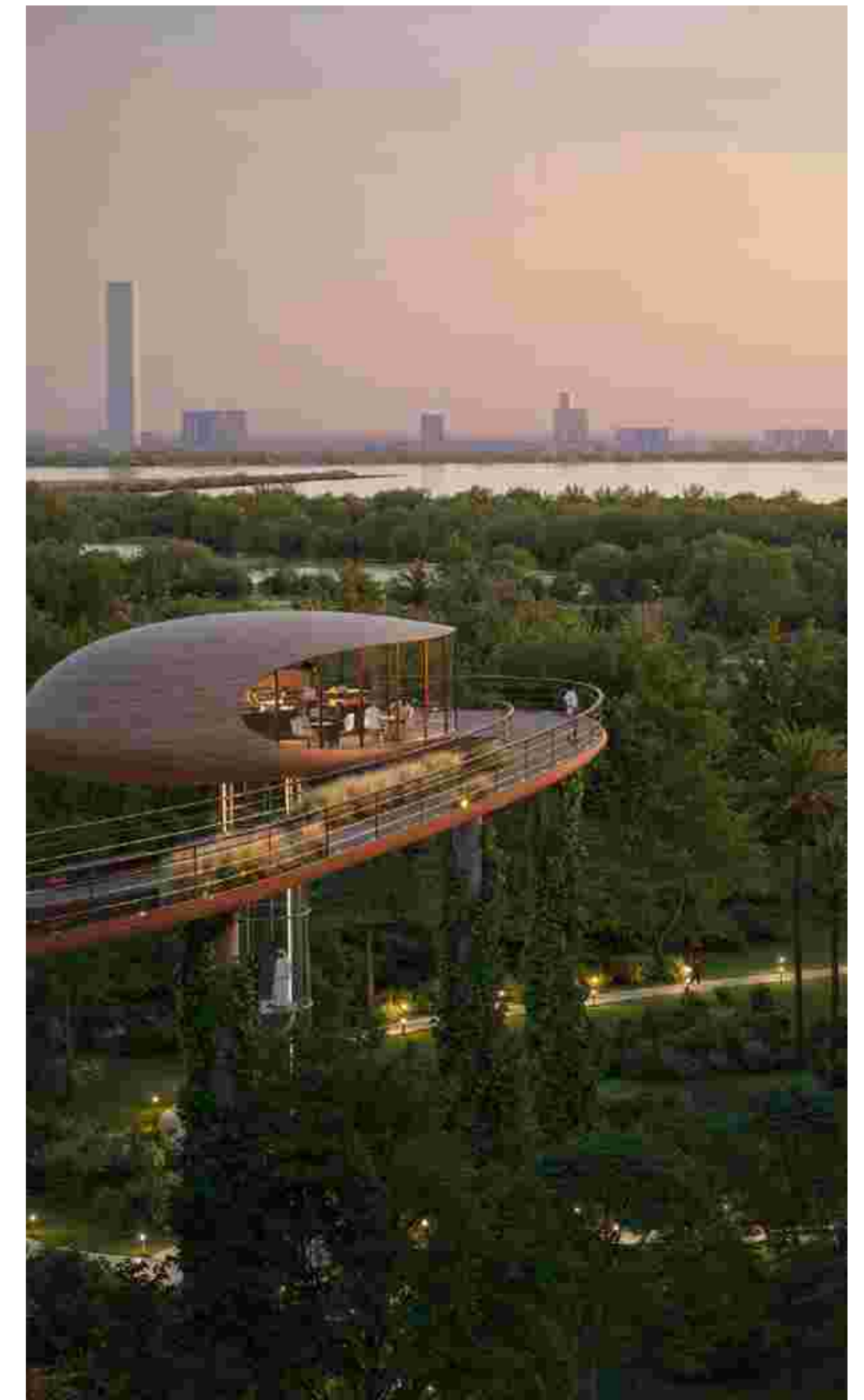
The Creekside

The Creekside redefines waterfront living with elegant residences, boutique hospitality and a vibrant promenade. Connected to Dubai Creek by electric abras, it offers a seamless blend of luxury and leisure where scenic views, world-class dining and direct access to the district's signature towers create an unmatched urban sanctuary.



The Sanctuary

A place of well-being and balance, The Sanctuary is set amid lush greenery and tranquil landscapes. Centred around a sports park and family-focused spaces, it features a serene mangrove park and an observation deck overlooking Ras Al Khor Wildlife Sanctuary, offering residents a rare connection to nature at the heart of the city.



The Mindspace

The Mindspace is the district's creative powerhouse, an inspired home for galleries, design studios and artist lofts. Here, innovation meets imagination in spaces designed to spark ideas, nurture collaboration and empower the next generation of visionaries shaping the future of creativity.



Soho

Soho is the cultural soul of the district, an energetic enclave where creativity thrives. Low- to mid-rise residences surround a dynamic hub for performances, exhibitions and year-round festivals celebrating artistry, innovation and the region's most exciting talent in an atmosphere alive with inspiration.

Design HQ

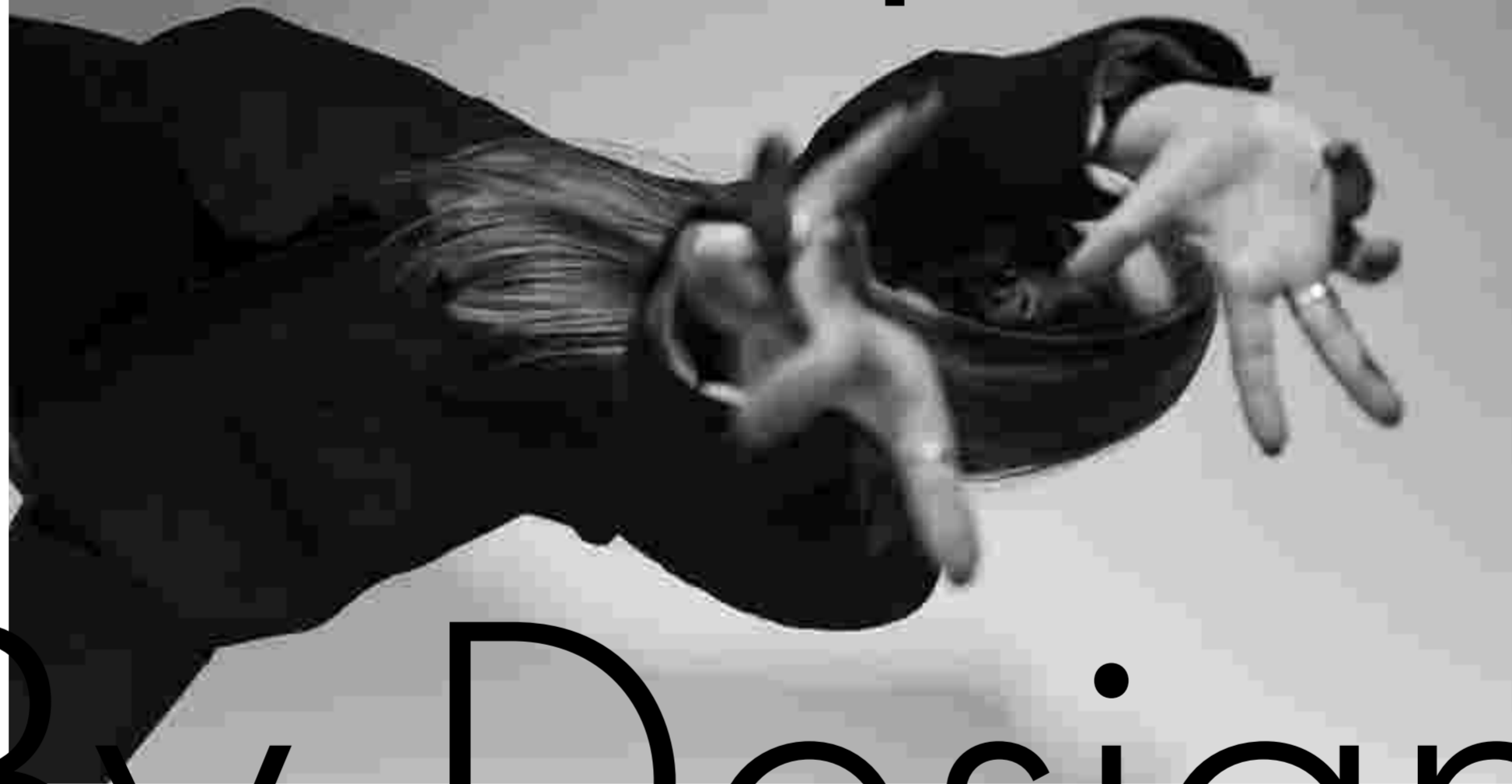
At the heart of the district lies Design HQ, where work and lifestyle converge in perfect harmony. Framing d3's iconic offices, it brings together premium residences, curated retail and fine dining to create a refined urban experience for professionals and creatives alike.



Welcome to

THE EDIT AT 

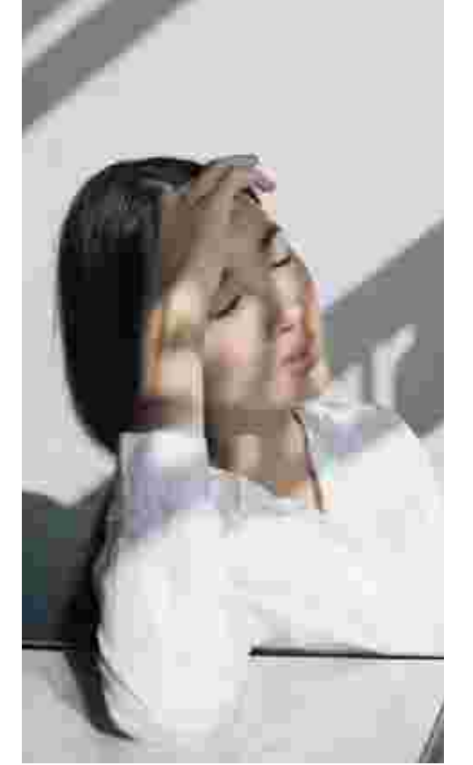
Unscripted.



By Design.



poetic
A poetic vision of flowing form

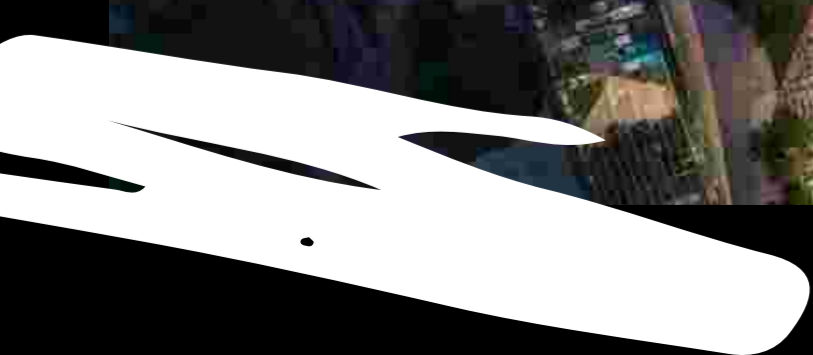
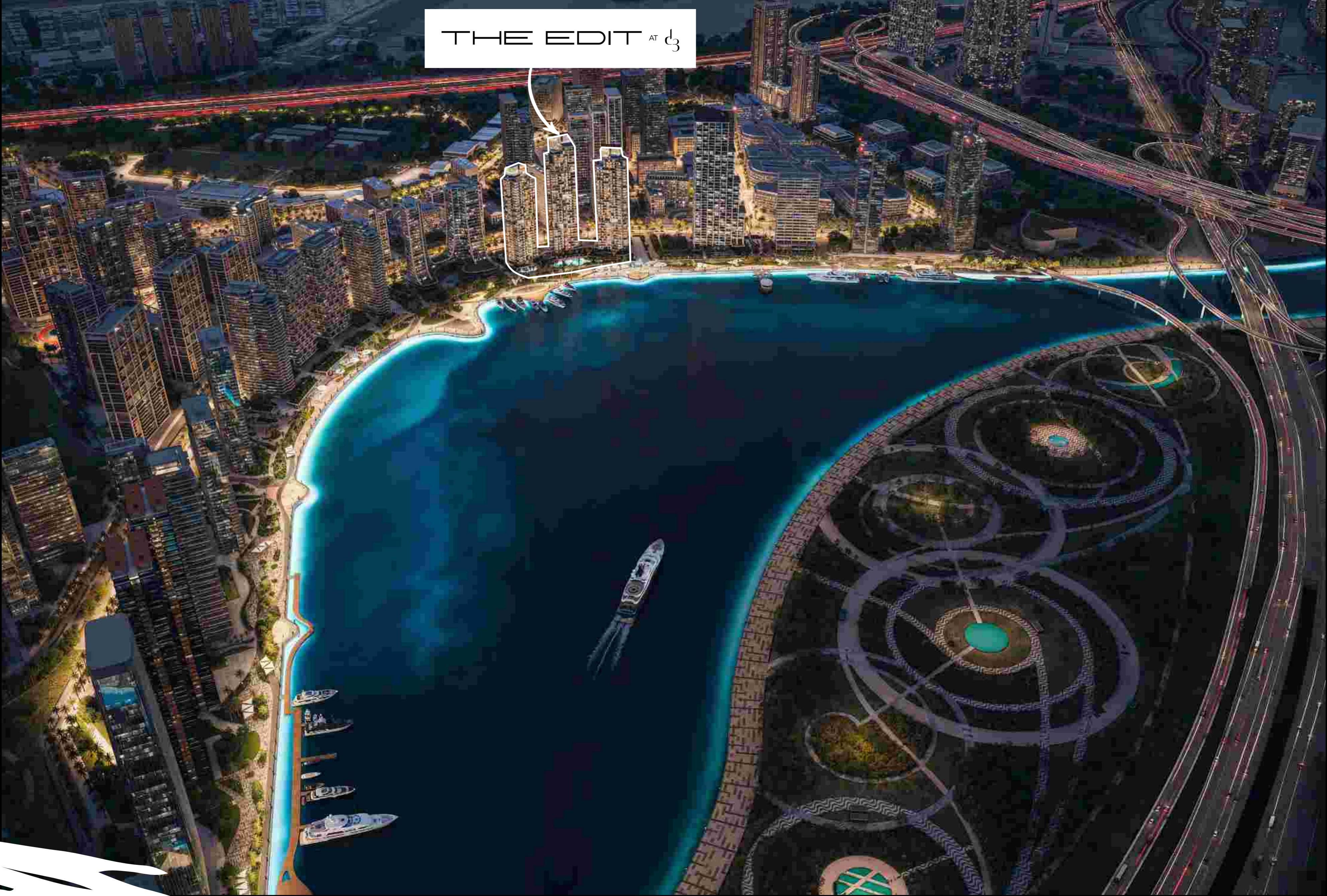


Flowing

More than just a residence, The Edit at d3 redefines urban living by blending innovative architecture with a thriving community. Rising as a statement of considered design, three sculptural towers evoke rhythm, balance and connection to nature. Where craft flows effortlessly into landscape, and living becomes an art form.



THE EDIT AT 



Designed by rhythm

Designed as a dynamic triad, The Edit at d3 rises in a choreographed harmony of architectural rhythm across the skyline. Soft edges, filleted corners and continuous balcony lines adorn the façades, while the sky gardens carve dramatic recesses into the vertical structure, creating a supreme sense of light, space and greenery even from the outside.





Gracefully positioned along the waterfront, this architectural trio strikes a balance between bold presence and quiet elegance. Terraces ripple like water, while elevated sky gardens blur the line between nature and structure, blending landscape and skyline with effortless fluidity.



Rooted in its surroundings yet reaching outward and upward, The Edit at d3 offers a refined connection to both city and shoreline that transcends architecture. Each tower is a vertical neighbourhood defined by greenery, light, elevated living and a sense of shared sky-bound community.



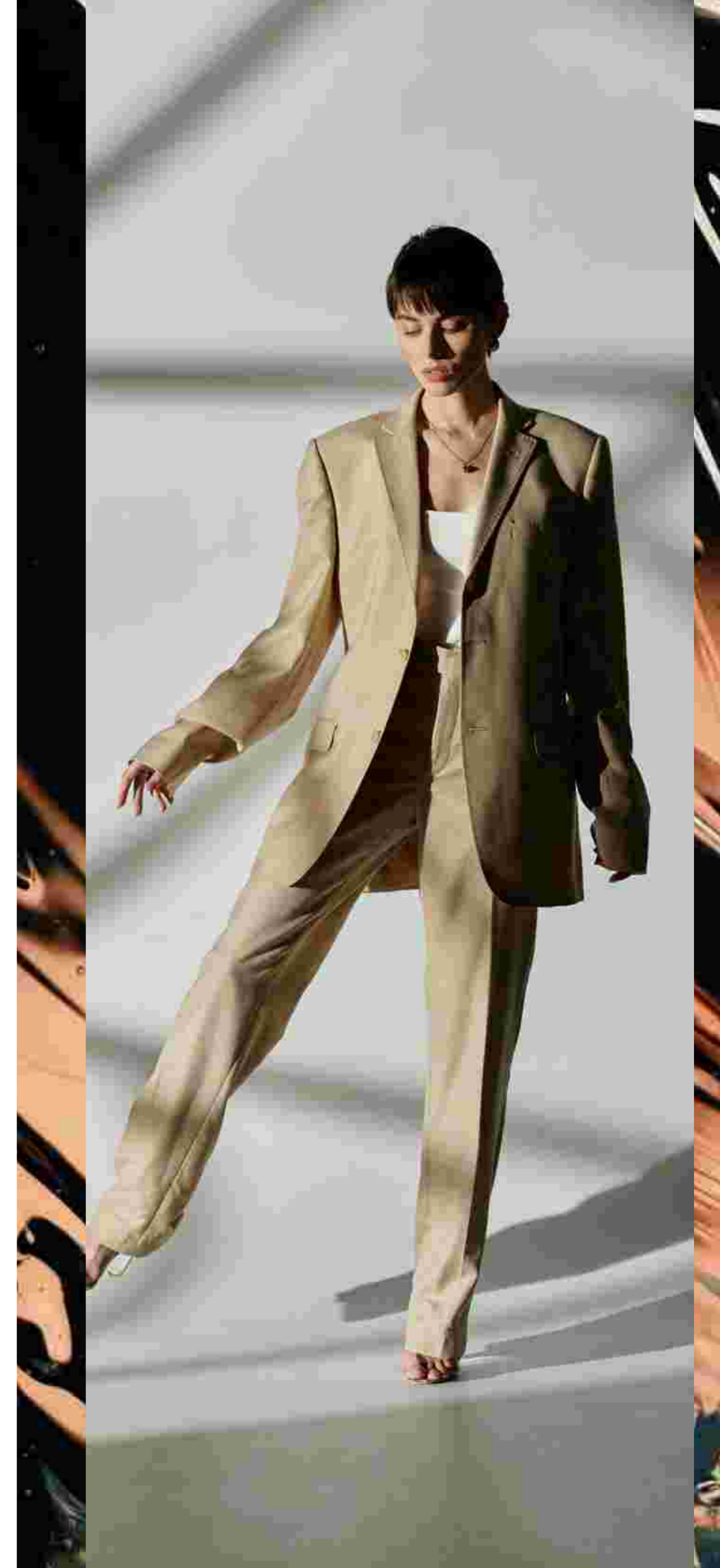
Wellness spaces

A Symphony *of* Beauty & Balance

Leisure zones

Social lounges

Landscaped terraces





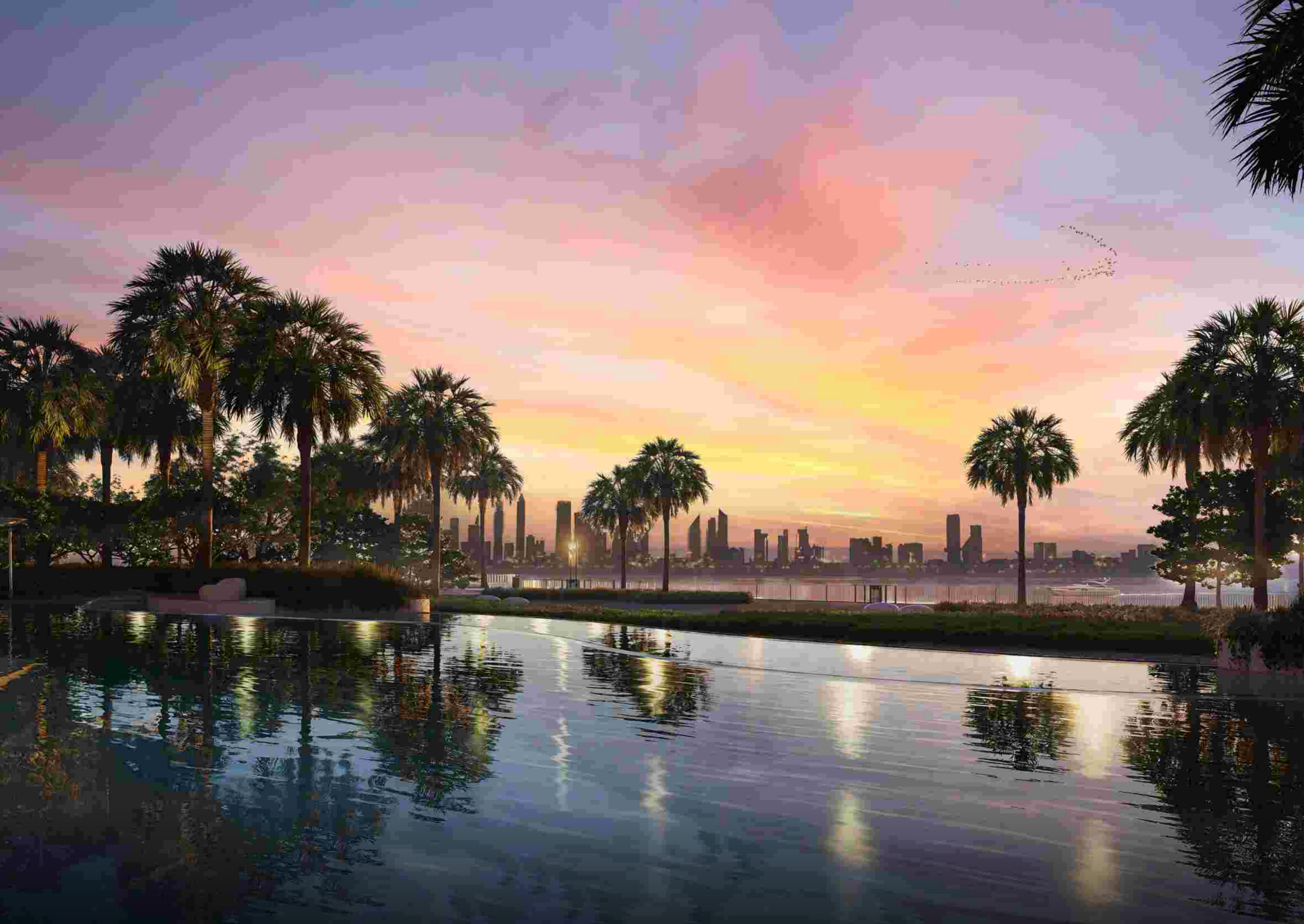


The towers feature
1-4 bedroom residences,
signature penthouses,
wellness and fitness
spaces, and landscaped
sky gardens.



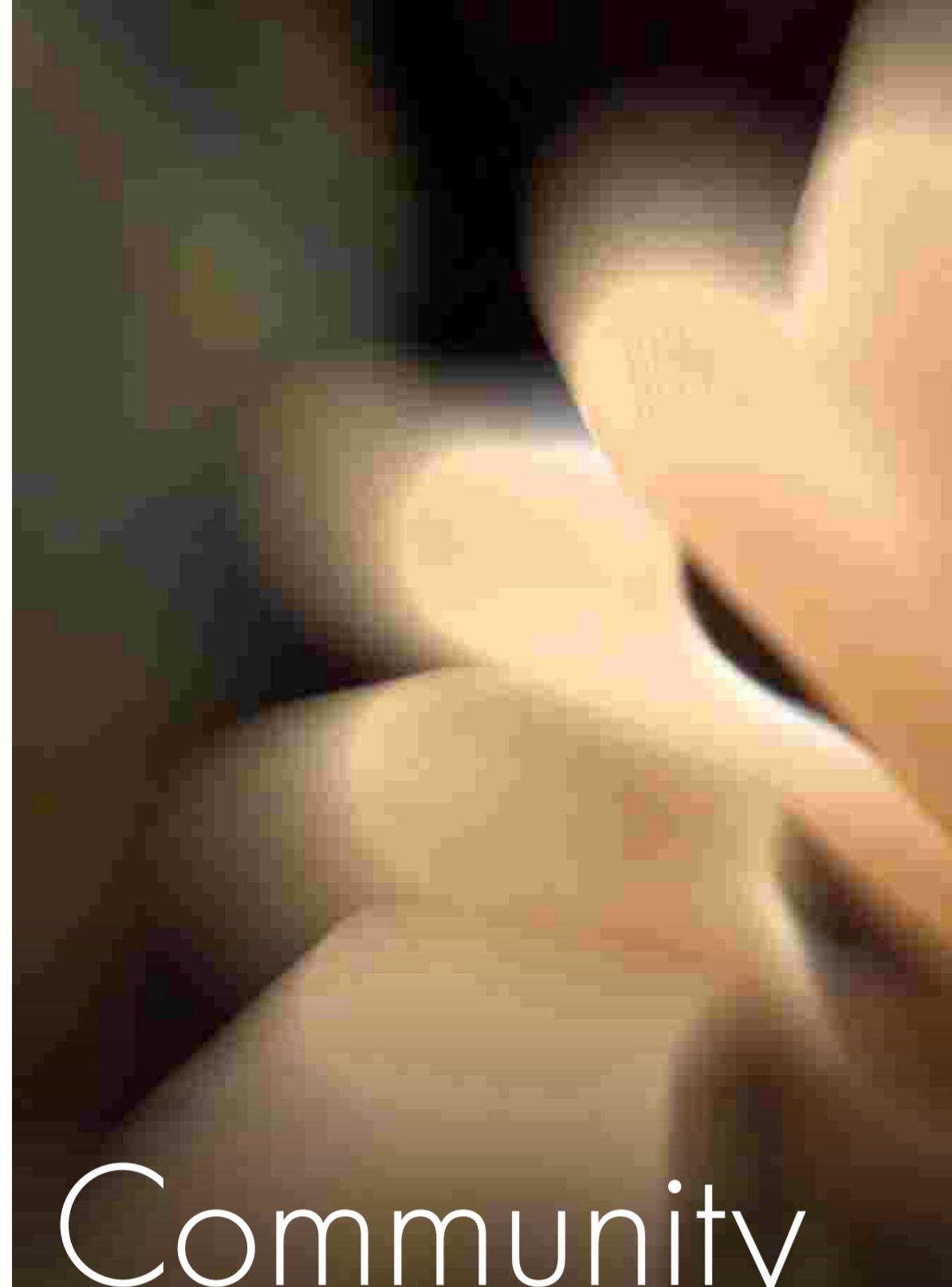
The towers boast extensive amenities and a design that strikes a seamless balance between sculptural presence and a welcoming, human-centred environment. Unobstructed views create direct connections between the ground and the landscape, blending the energy of the city with the calm of the waterfront.





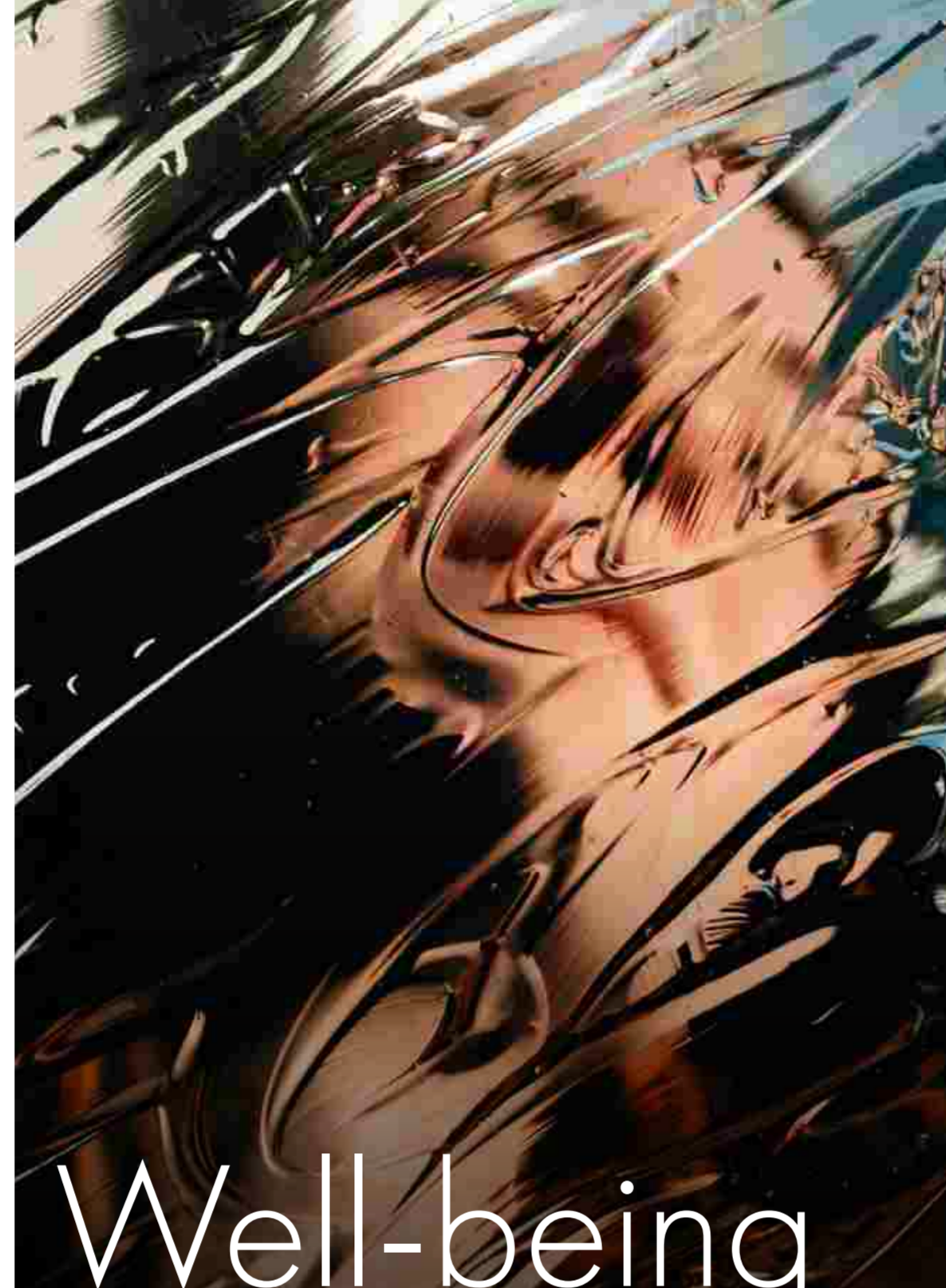
Designed for

WIKI



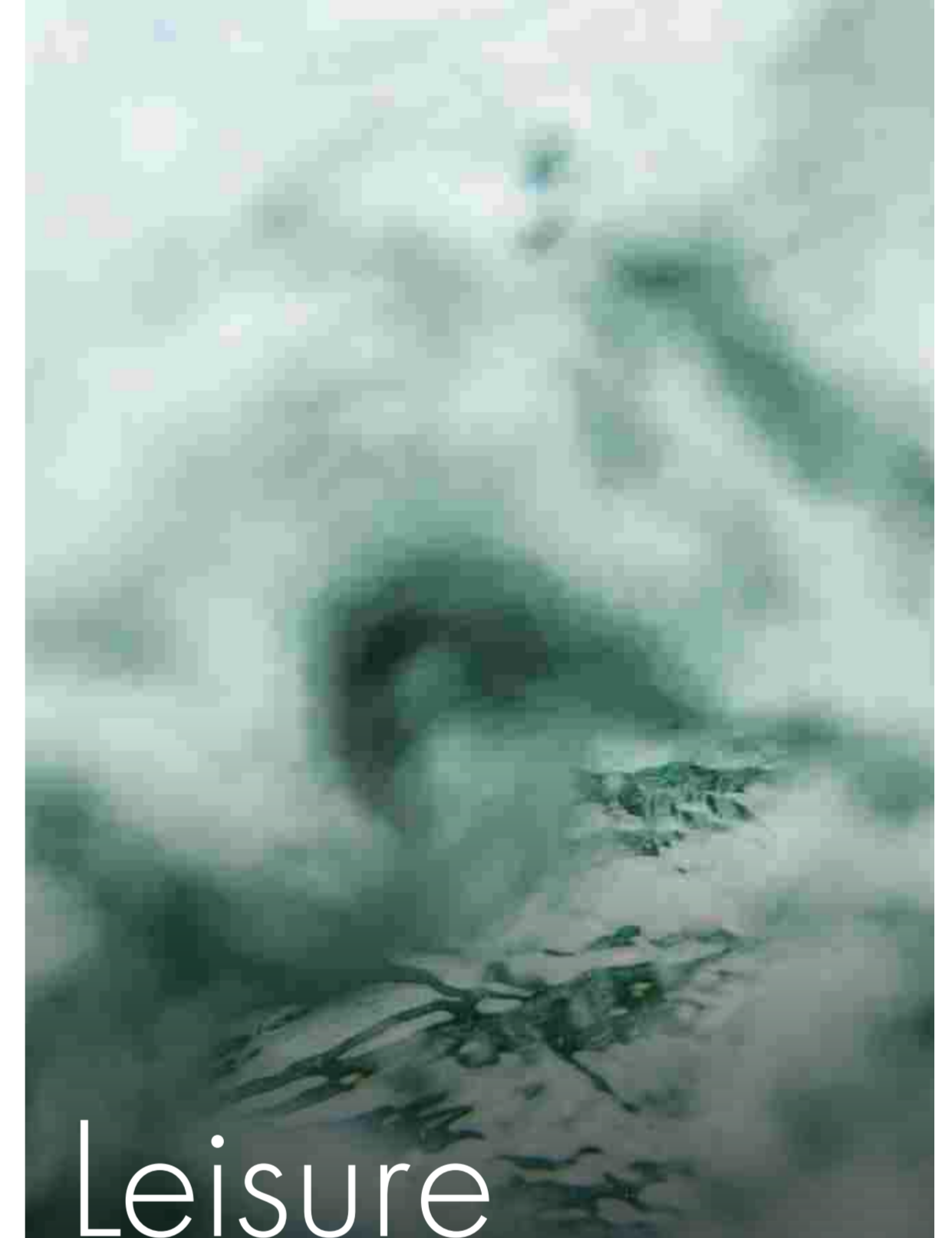
Community

- Double-height entrance lobby & receptions
- Co-working & gallery space
- Family lounges with multi-purpose spaces
- Events lounge
- Sky gardens / Gathering spaces
- Social seating & cabanas
- BBQ area & California Rooms



Well-being

- Gym (indoor & outdoor)
- Yoga studio
- Wellness studio
- Sky gardens / Wellness terrace
- Padel court



Leisure

- Kids' club (indoor & outdoor)
- Teenagers' club, arcade, lounge & library
- Cinema room
- Sky lounge
- Reading / Quiet rooms
- Resort-style family pool & lap pool
- Kids' pool
- Kids' outdoor play area

Key Features



Amenities Plan



- | | | | | | |
|---|----------------|----|---------------------------|----|-----------------|
| 1 | Entrance | 6 | BBQ Area/California Rooms | 11 | Lower Lap Pool |
| 2 | Wellness Space | 7 | Promenade Access | 12 | Padel Court |
| 3 | Pool Deck | 8 | Kids' Play Area | 13 | Private Cabanas |
| 4 | Communal Space | 9 | Social Spaces | 14 | Kids' Pool |
| 5 | Seating Areas | 10 | Upper Family Pool | 15 | Parking Access |

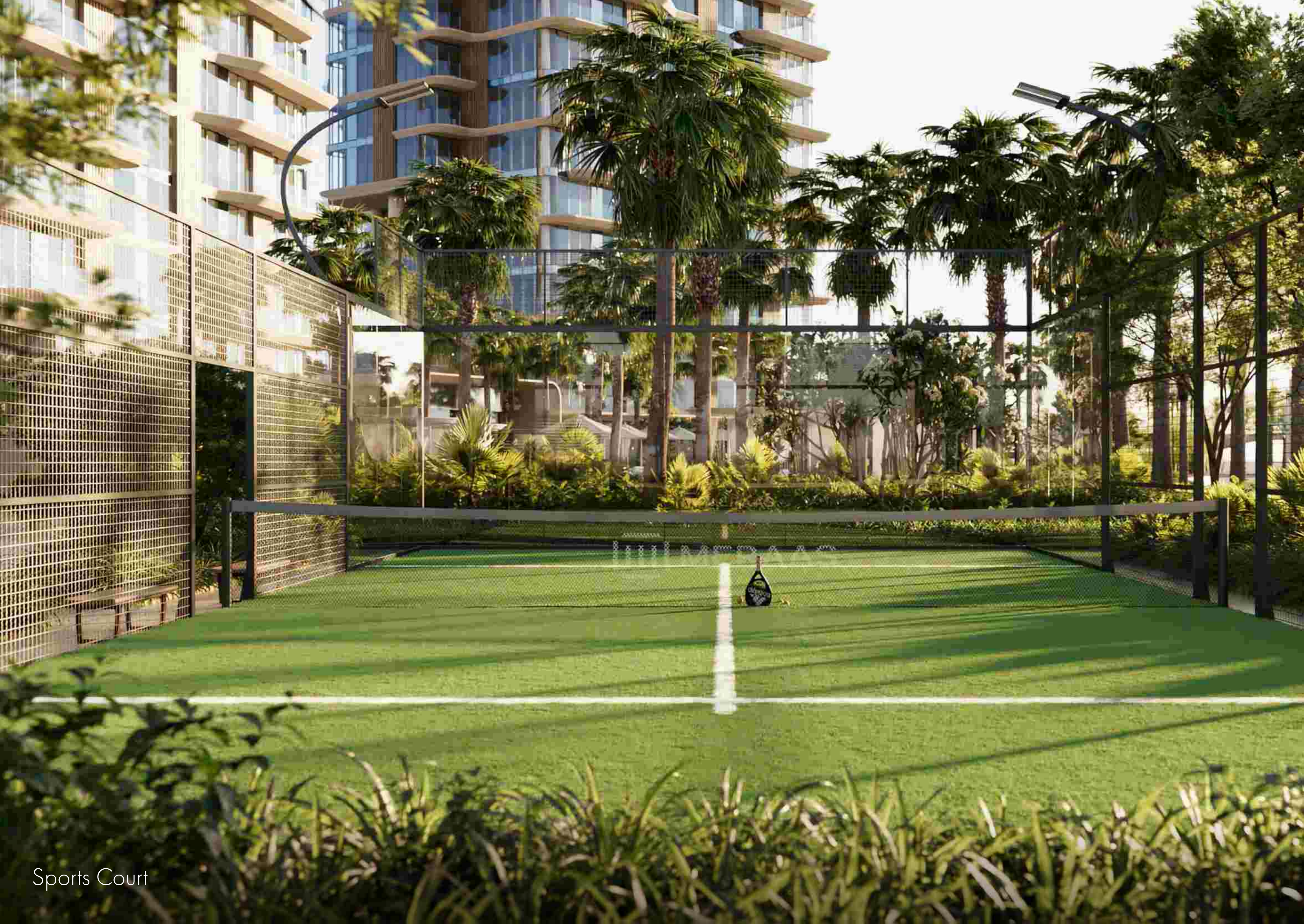




Swimming Pool



Swimming Pool



Sports Court



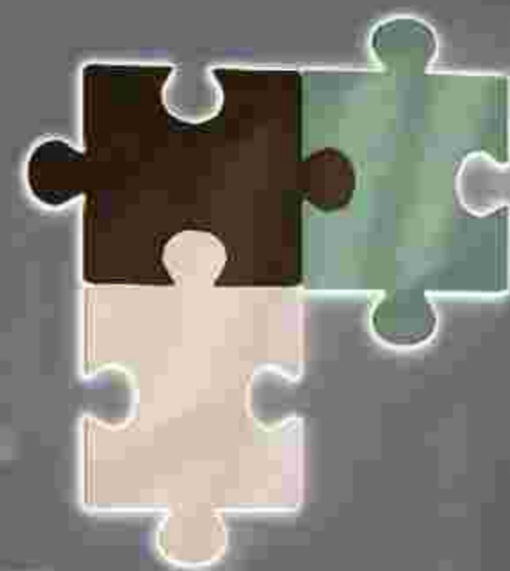
Tower A is dedicated to entertainment, creativity and leisure. Here, residents can unwind in stylish lounges, enjoy inspired productivity within thoughtfully crafted co-working and creative spaces, or gather for exclusive screenings in the private cinema, an intimate setting where entertainment reaches its finest expression.





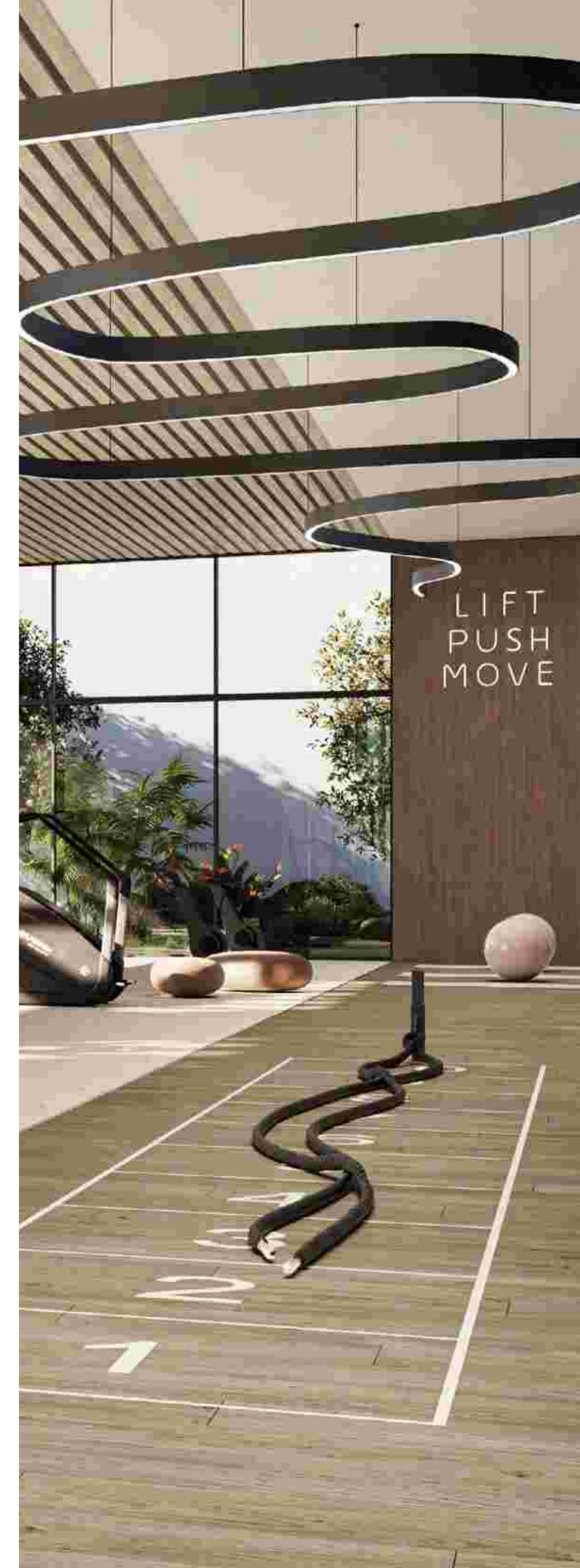
Co-working Space

GOOD VIBES
only





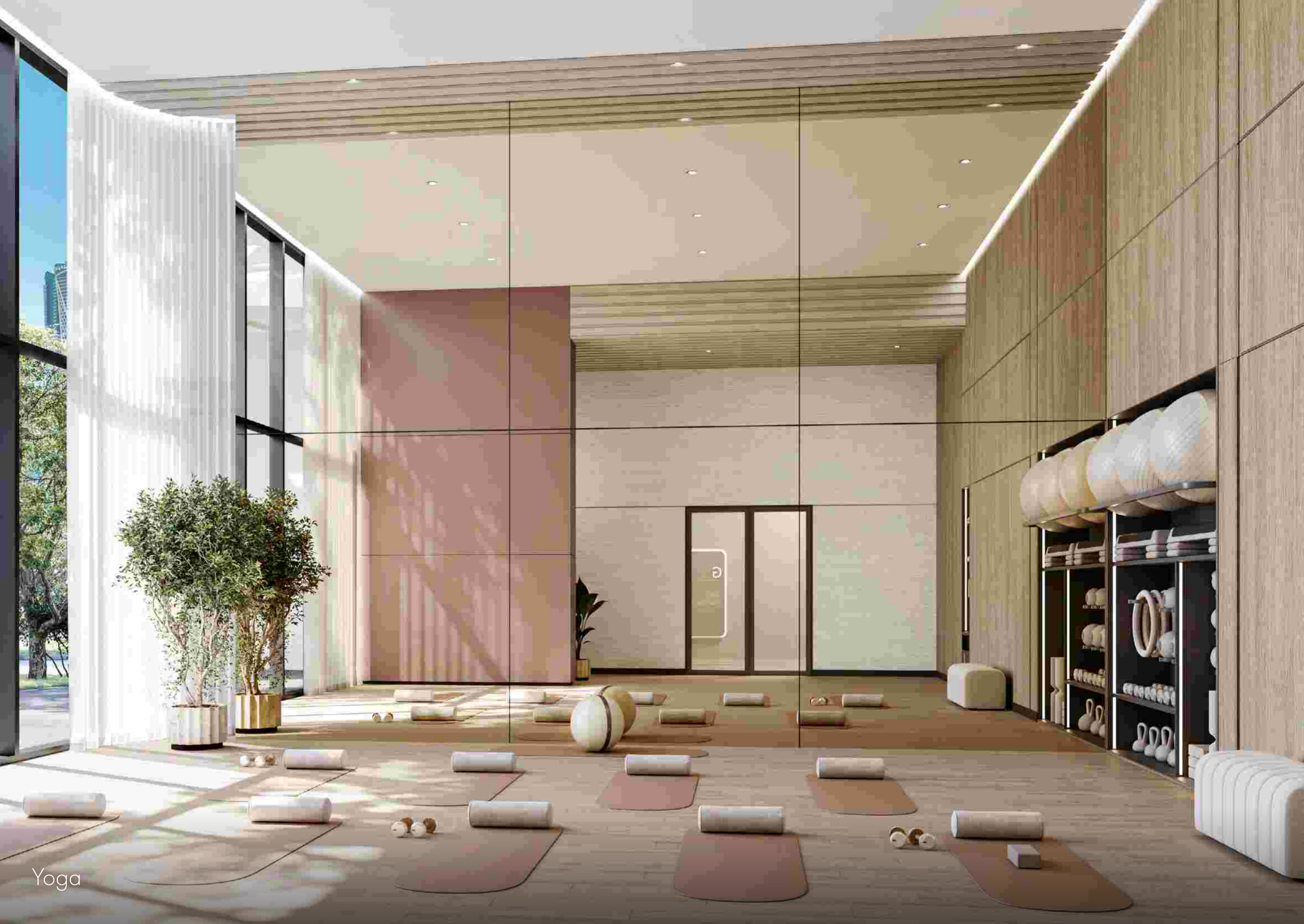
Tower B centres on health, balance and vitality. A state-of-the-art wellness club roots the experience, complemented by dedicated yoga, boxing and meditation studios that encourage both focus and renewal. Serene, resort-style pools complete the offering, inviting residents to relax and recharge in a tranquil atmosphere that feels like a daily retreat.





D
E
DON'T
QUIT

Gym



Yoga



Tower C is designed with families at heart, creating warm, connected spaces for all ages. Dedicated zones for children and families inspire play, discovery and togetherness, while peaceful outdoor areas encourage meaningful moments shared between generations. This tower embodies a sense of community and comfort to create a place where family life flourishes.





Family Lounge



All towers are connected via

the lobbies

ensuring easy access for all
residents to enjoy

every

amenity at their leisure



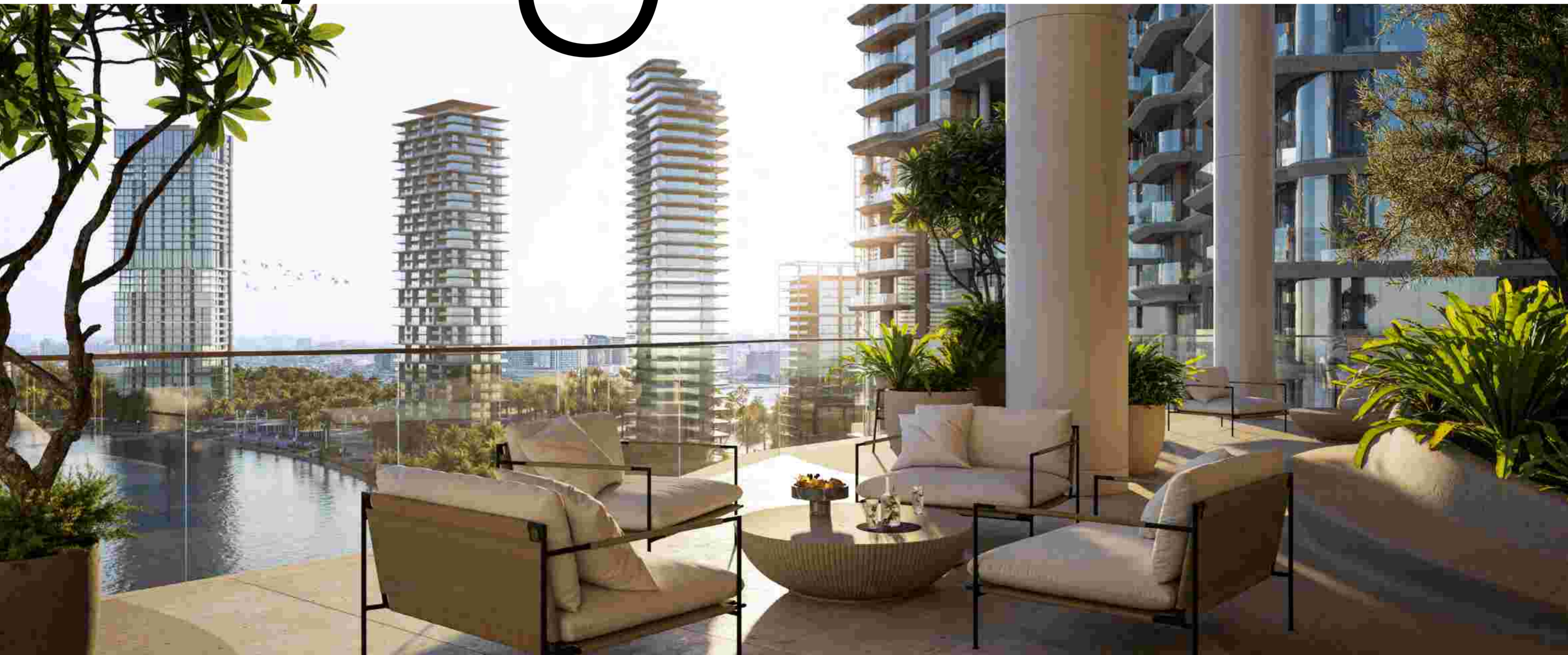


Lobby

Sky gardens

Dramatic sky gardens punctuate the towers, offering sanctuaries where nature, wellness and community blend. Crafted landscapes and integrated greenery maintain a cohesive design language that mirrors the ground-floor aesthetic, while

curated planting serves as a focal element, and generous paved areas offer flexibility for informal gatherings, quiet relaxation or community events.

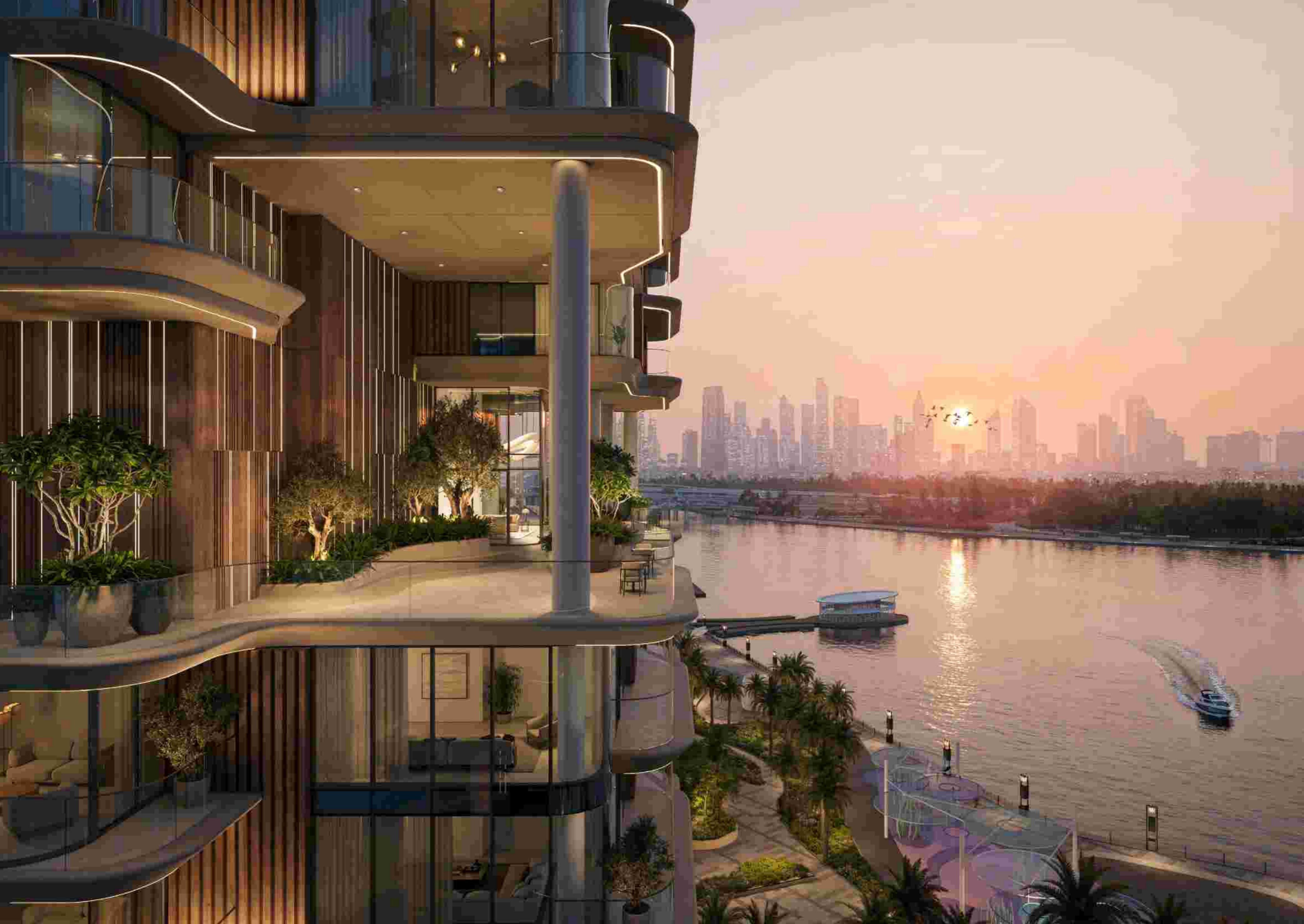


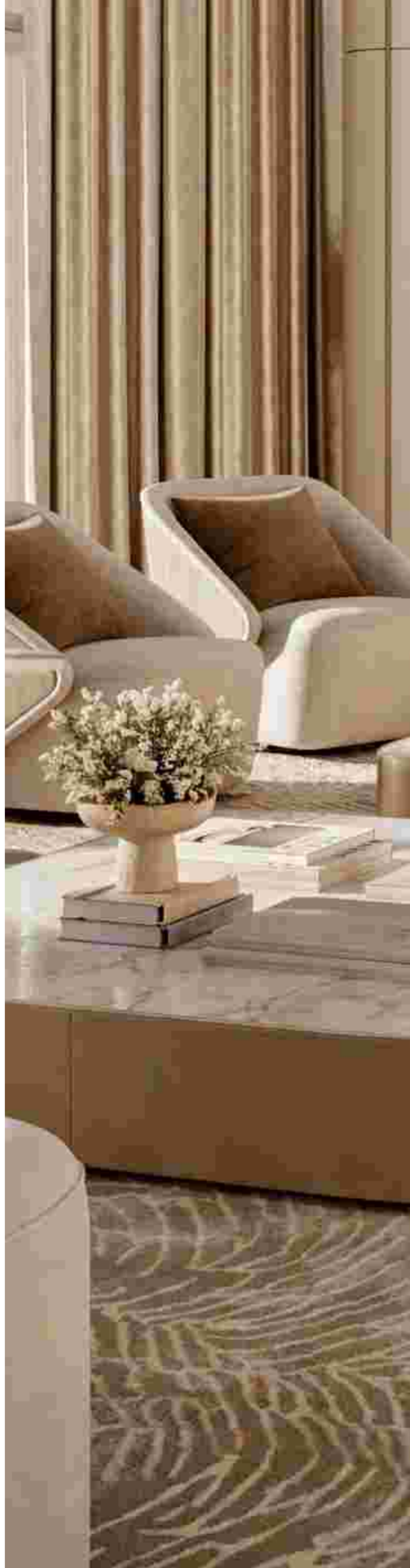


Sky Garden Lounge



Sky Garden Event Room





Architectured

Each home has been meticulously shaped as a celebration of intentional design, where natural light, considered materials and thoughtful proportions come together in perfect balance to evoke a sense of calm sophistication. Flowing layouts create an effortless rhythm between rooms, while tactile surfaces, subtle textures and a soft interplay of light and shadow bring depth and warmth to every space.

Serenity

Every detail

speaks

— to a

quiet

pursuit of *perfection*

From the precision of joinery to the honesty of natural finishes, every detail is crafted to create interiors that feel both timeless and contemporary. Expansive water views draw the eye outward, connecting serene interiors with the shifting beauty of the world beyond, transforming daily life into something extraordinary. These residences are designed not only to be lived in, but to be felt.

Views to



live



for

Discover one- to four-bedroom residences that reimagine what modern living can be. Every home is a sanctuary of light and space, where contemporary design meets the quiet beauty of effortless comfort. Expansive, open-plan interiors flow seamlessly toward panoramic windows that frame glittering waters and unforgettable Dubai skyline, a living canvas that changes with every hour of the day.

Every finish tells a story of craftsmanship and care, refined materials, artful details and interiors that balance warmth with timeless elegance. In the bedrooms, serenity takes shape as generous spaces invite rest, while custom-built wardrobes blend functionality with finesse. Sunlit kitchens and bathrooms transform daily rituals into moments of indulgence. Step out onto your private balcony and feel the pulse of the city meet the calm of the water.

Apartments



1-Bedroom | Living Area



2-Bedroom | Living Area



3-Bedroom | Living Area



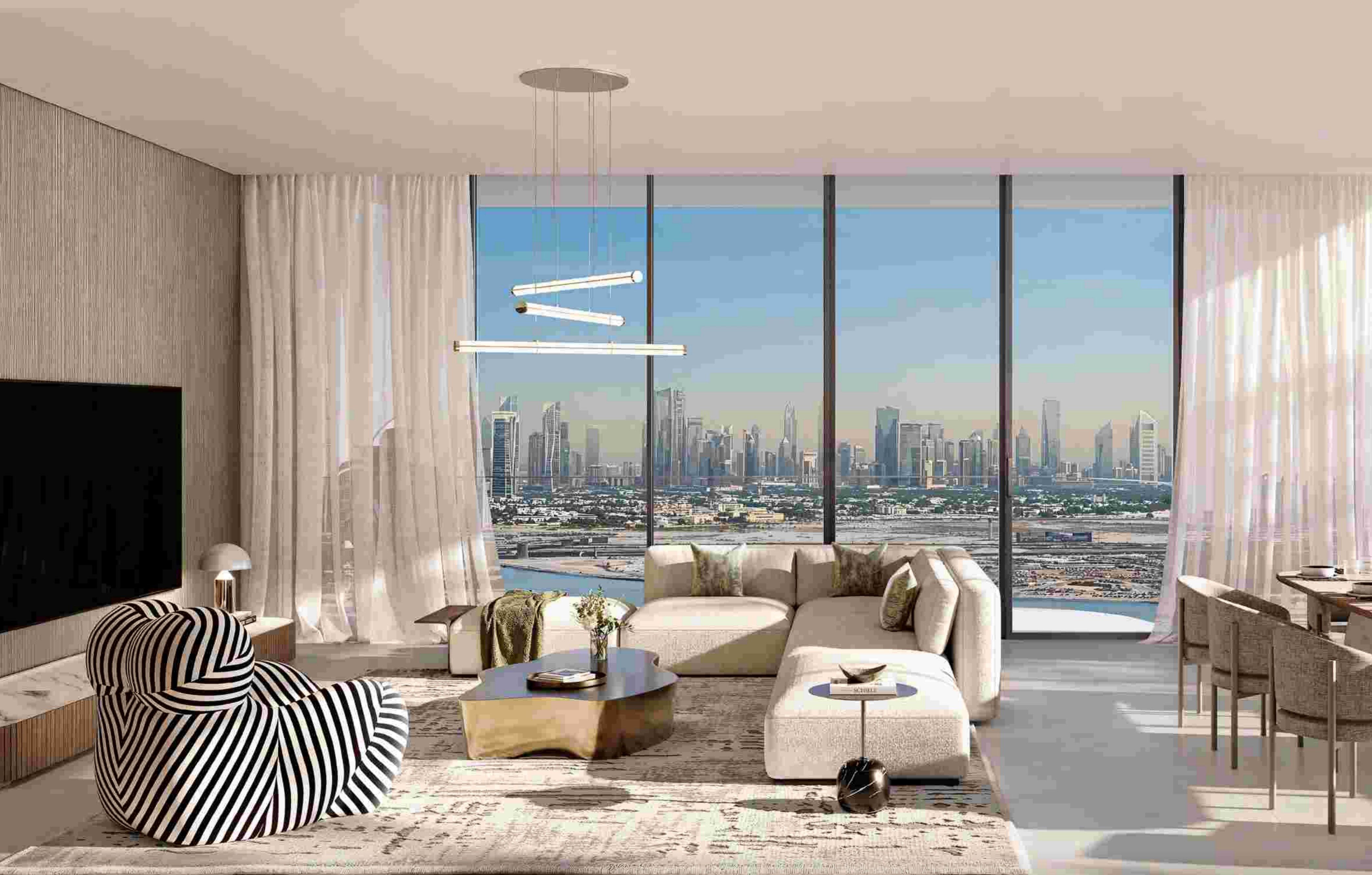
3-Bedroom | Living Area



3-Bedroom | Bedroom



3-Bedroom | Bathroom



4-Bedroom | Living Area



4-Bedroom | Living Area

Three exclusive penthouses embody polished luxury and modern sophistication at an extraordinary scale, each an architectural statement where natural light, flowing air, and inviting energy define every space.

Soaring double-height living and dining areas amplify a sense of drama, framed by floor-to-ceiling windows that reveal sweeping views of water and greenery below. Sculptural staircases and expansive private terraces offer a seamless indoor-outdoor flow, creating a spectacular stage for both elite daily life and inspired entertaining.

Within, every layout speaks to indulgence and intention. Bedrooms evoke tranquility, bathrooms elevate wellness, and each finish expresses a commitment to design that is both timeless and bold.



Live

iconic



Penthouses



Penthouse | Living Area



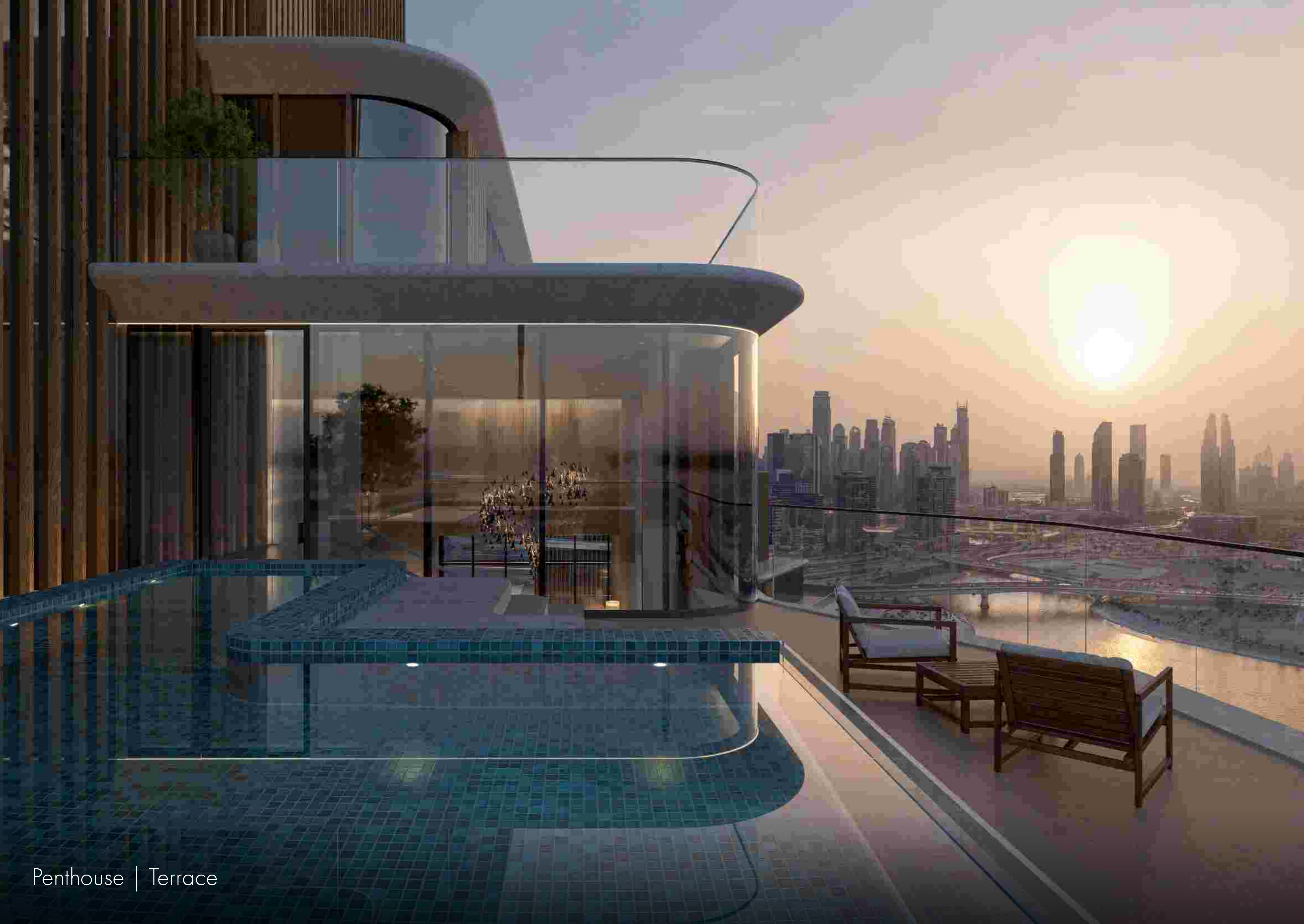
Penthouse | Living Area



Penthouse | Bedroom



Penthouse | Bathroom



Penthouse | Terrace

