

Reference No. PLS00086

DEVELOPER **DAMAC**

Live the Oceanfront Lifestyle | Premium Seaside Apartments | Coral Reef

Starting from **₹1,660,000**

 Coral Reef by Damac - Dubai - United Arab Emirates

[VIEW IN MAP](#) 



Payment Plan
20/50/30



Handover From
Q4 2026



Location
Coral Reef by Dama...



Property Type
Apartment



DLD Fee
4 %

Description:

Coral Reef by DAMAC Properties is an iconic luxury waterfront residential development located in the prestigious **Dubai Maritime City**, designed to redefine seaside living in Dubai. The project features a striking high-rise tower offering a collection of thoughtfully designed 1, 2, and 3 bedroom apartments, each crafted with contemporary architecture, open-plan layouts, and expansive balconies that capture uninterrupted views of the Arabian Gulf and the surrounding maritime skyline. High-quality finishes, modern interiors, and floor-to-ceiling windows enhance the sense of space and natural light, creating elegant homes that blend comfort with sophistication.

A defining element of Coral Reef is its unique artistic concept, developed in collaboration with acclaimed French artist Vincent Faudemer. His signature Babolex sculptures and art installations are seamlessly integrated throughout the building's common areas and selected interiors, giving the project a distinctive identity that combines luxury living with creative expression. This art-inspired theme sets Coral Reef apart from traditional waterfront developments, adding character and exclusivity to the overall lifestyle experience.

Download the **Prosper App**



Residents of Coral Reef will enjoy a resort-style environment with an array of premium amenities designed for relaxation, wellness, and social living. These include infinity swimming pools overlooking the sea, landscaped gardens, fitness and wellness facilities, children’s play areas, and dedicated leisure spaces. The development also benefits from direct access to waterfront promenades, offering a tranquil coastal atmosphere while remaining well connected to key destinations such as Downtown Dubai, Sheikh Zayed Road, Dubai Marina, and major airports.

With its prime location, strong design concept, luxury amenities, and flexible off-plan payment plans, Coral Reef by DAMAC presents a compelling opportunity for both end-users and investors. It combines artistic elegance, modern waterfront living, and long-term investment potential within one of Dubai’s fastest-growing coastal communities.

Amenities

Swimming Pool	Gym Fitness Center	Kids Play Area
BBQ Area	Multipurpose Hall	24/7 Security & CCTV
High-speed Elevators	Smart Home Integration	Pet-friendly Zones
Supermarket / Store	Restaurants Cafés	Jogging Cycling Track
Gardens Parks	Yoga Pilates Studio	Concierge Services
Maid’s Room	Parking	Beach Access
Sports Courts	Clubhouse Community Center	

Payment Plan

INSTALMENT	PERIOD	DATE	BOOKING AMOUNT %
Down Payment	Immediate	-	20
1	After Booking 3 Months	-	4

Download the **Prosper App**



INSTALMENT	PERIOD	DATE	BOOKING AMOUNT %
2	After Booking 6 Months	-	4
3	After Booking 9 Months	-	4
4	After Booking 12 Months	-	4
5	After Booking 15 Months	-	3
6	After Booking 18 Months	-	3
7	After Booking 21 Months	-	3
8	After Booking 24 Months	-	3
9	After Booking 27 Months	-	2
10	After Booking 30 Months	-	2
11	After Booking 33 Months	-	2
12	After Booking 36 Months	-	2
13	After Booking 39 Months	-	2
14	After Booking 42 Months	-	2
15	After Booking 45 Months	-	2
16	After Booking 48 Months	-	2

Download the **Prosper App**



INSTALMENT	PERIOD	DATE	BOOKING AMOUNT %
17	After Booking 51 Months	-	2
18	After Booking 54 Months	-	2
19	After Booking 57 Months	-	2
20	On Completion	-	30

Regulatory Information

Permit Number: **1621534217**

DED: **771800**

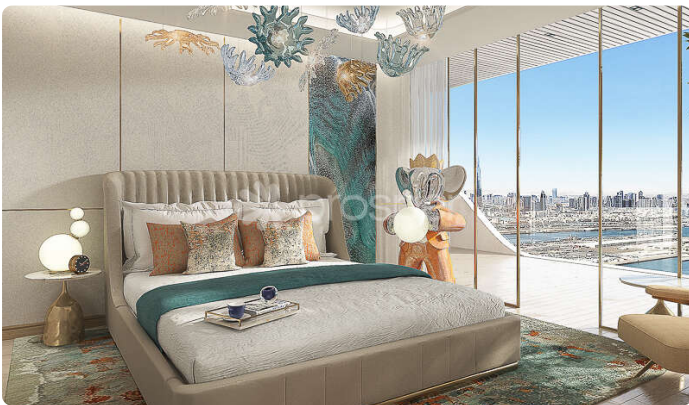
RERA: **143033**

BRN: **40659**

Trakheesi Permit:

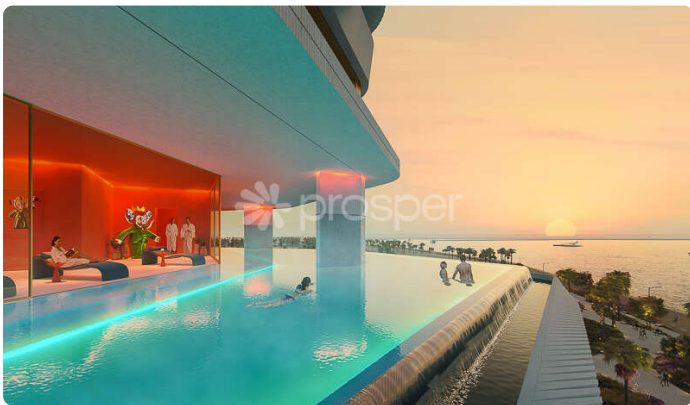


more photos



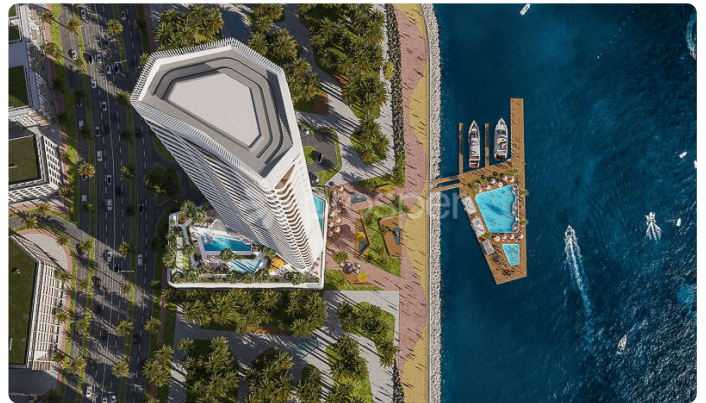
Download the Prosper App





Download the Prosper App





Unit Types

View units which comes under this project.

Apartment

TYPE	BEDROOM	AREA(SQFT)	PRICE	
1 BEDROOM TYPE A1	1	Built Up: 776 – 943	₹ 1,660,000	
1 BEDROOM TYPE B1	1	Built Up: 776 – 943	₹ 1,660,000	

Download the Prosper App



TYPE 1 BEDROOM TYPE C1	BEDROOM 1	AREA (SQFT) Built Up: 776 – 943	PRICE 1,660,000	
TYPE 1 BEDROOM TYPE D1	BEDROOM 1	AREA (SQFT) Built Up: 776 – 943	PRICE 1,660,000	
TYPE 1 BEDROOM TYPE E1	BEDROOM 1	AREA (SQFT) Built Up: 776 – 943	PRICE 1,660,000	
TYPE 1 BEDROOM TYPE F1	BEDROOM 1	AREA (SQFT) Built Up: 776 – 943	PRICE 1,660,000	
TYPE 2 BEDROOM TYPE A1	BEDROOM 2	AREA (SQFT) Built Up: 1197 – 1399	PRICE 2,530,000	
TYPE 2 BEDROOM TYPE B2	BEDROOM 2	AREA (SQFT) Built Up: 1197 – 1399	PRICE 2,530,000	
TYPE 3 BEDROOM TYPE A1	BEDROOM 3	AREA (SQFT) Built Up: 1770 – 1815	PRICE 3,330,000	
TYPE 3 BEDROOM TYPE A2	BEDROOM 3	AREA (SQFT) Built Up: 1770 – 1815	PRICE 3,330,000	

Download the **Prosper App**

