



Reference No. PLS00042

DEVELOPER



## Modern Studios & Apartments | Flexible Plans | Titania

Starting from **₹ 679,999**

Binghatti Titania - Dubai - United Arab Emirates

[VIEW IN MAP](#) ↗



**Payment Plan**  
70/30



**Handover From**  
Q3 2020



**Location**  
Binghatti Titania - D...



**Property Type**  
Apartment



**DLD Fee**  
4 %

### Description:

**Binghatti Titania** is an ambitious and contemporary off-plan residential development by Binghatti Developers, situated in the rapidly growing **Majan** community of **Dubailand, Dubai**. The project features a striking high-rise tower comprising 789 meticulously designed apartments, including studios, one-bedroom, and two-bedroom units, all reflecting Binghatti's signature geometric and modern architectural style.

Each apartment is designed with high ceilings offering a spacious and airy living experience, while the grand lobby boasts an impressive ceiling creating a sense of luxury from the moment residents enter. Scheduled for completion in early 2027, Titania is built with both lifestyle and convenience in mind, offering a comprehensive range of amenities including a swimming pool with sun deck, fully equipped fitness center, yoga and meditation zones, landscaped leisure decks, children's play areas, 24/7 security, concierge services, and smart home technology in select units.

Download the **Prosper App**



Strategically located with direct access to Sheikh Mohammed Bin Zayed Road, the development ensures excellent connectivity to major Dubai destinations, including Downtown Dubai, Burj Khalifa, and entertainment hubs like Global Village and IMG Worlds. The project's modern design, well-planned amenities, and prime location make it an appealing choice for both end-users seeking a high-quality lifestyle and investors looking for potential capital growth and attractive rental yields in a developing, vibrant community. With flexible payment plans and freehold ownership options, Binghatti Titania stands out as a promising addition to Dubai's residential landscape, blending contemporary urban living with long-term investment potential.

## Amenities

Swimming Pool	Gym   Fitness Center	Yoga   Pilates Studio
Jogging   Cycling Track	Gardens   Parks	Multipurpose Hall
BBQ Area	Kids Play Area	Clubhouse   Community Center
24/7 Security & CCTV	Concierge Services	Smart Home Integration
Parking	Sports Courts	Maid's Room
High-speed Elevators	Pet-friendly Zones	Restaurants   Cafés
Supermarket / Store		

## Payment Plan

INSTALMENT	PERIOD	DATE	BOOKING AMOUNT %
1	After Booking	11-11-2025	20
2	After Booking	09-02-2026	13
3	After Booking	09-03-2026	13

Download the **Prosper App**



INSTALMENT	PERIOD	DATE	BOOKING AMOUNT %
4	After Booking	09-08-2026	12
5	After Booking	09-11-2026	12
6	On Completion	-	30

Regulatory Information

Permit Number: **1292259779**

---

DED: **771800**

---

RERA: **143033**

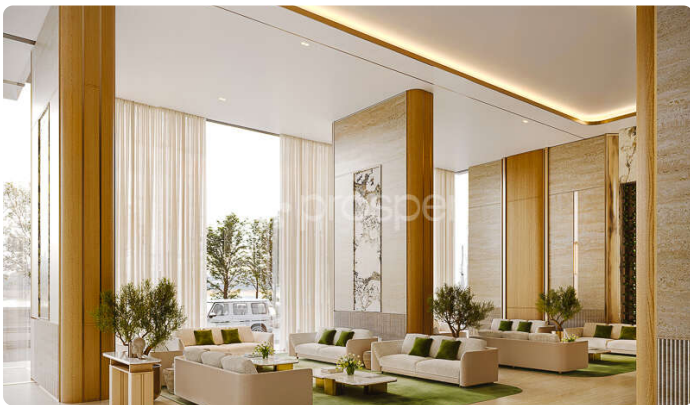
---

BRN: **40659**

Trakheesi Permit:

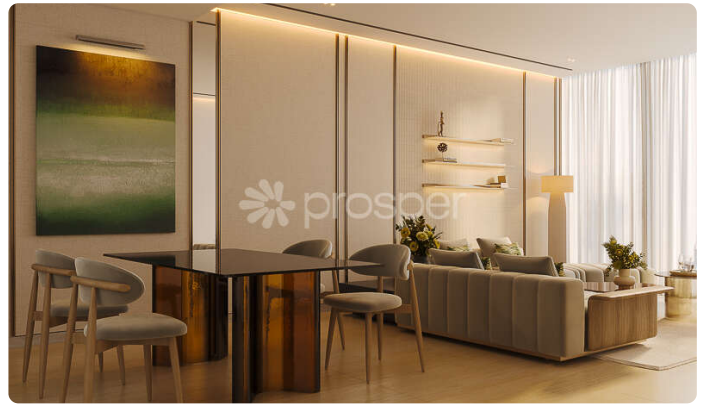
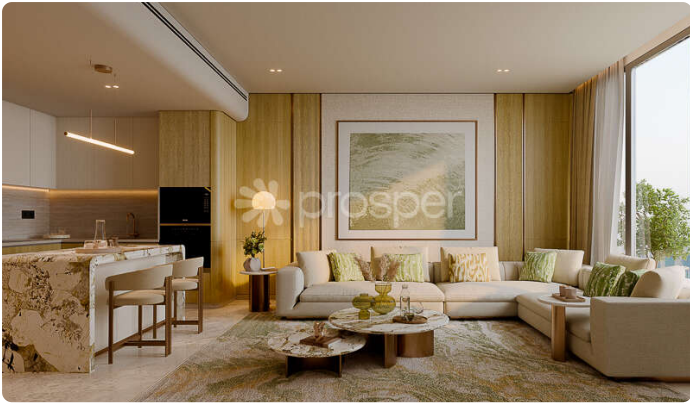


more photos



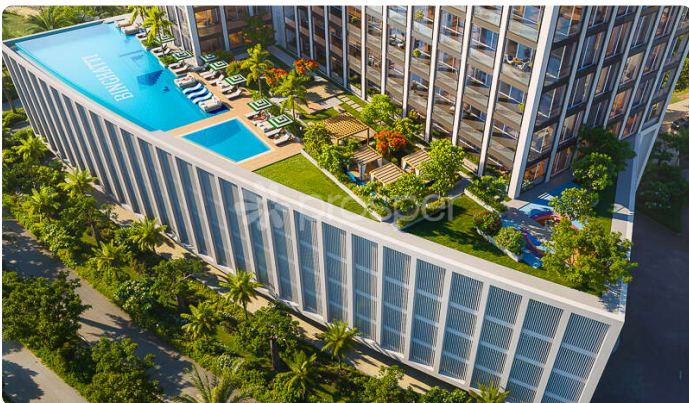
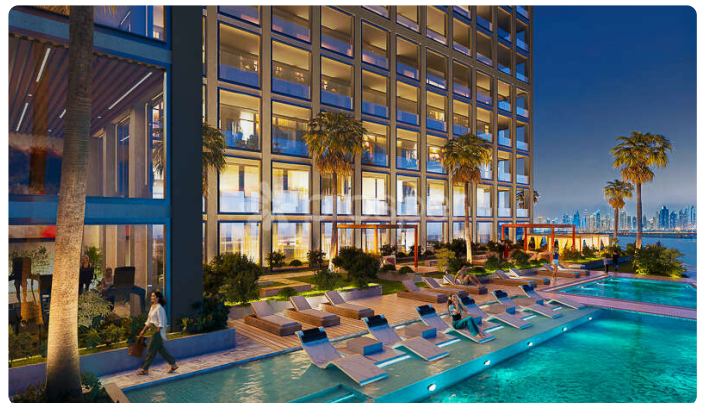
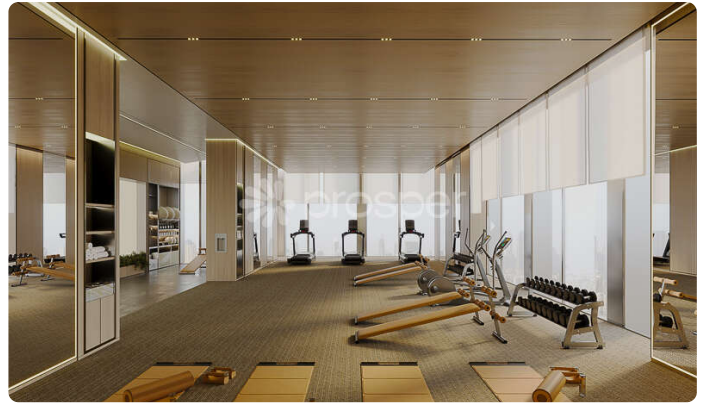
Download the Prosper App





Download the Prosper App





### Unit Types

View units which comes under this project.

Download the Prosper App



## Apartment

TYPE STUDIO - TYPE 01	BEDROOM 0	AREA (SQFT) Built Up: 369 - 563	PRICE AED 679,999	
TYPE STUDIO - TYPE 02	BEDROOM 0	AREA (SQFT) Built Up: 369 - 563	PRICE AED 679,999	
TYPE STUDIO - TYPE 03	BEDROOM 0	AREA (SQFT) Built Up: 369 - 563	PRICE AED 679,999	
TYPE 1 BEDROOM - TYPE 01	BEDROOM 1	AREA (SQFT) Built Up: 683 - 933	PRICE AED 1,049,999	
TYPE 1 BEDROOM - TYPE 02	BEDROOM 1	AREA (SQFT) Built Up: 683 - 933	PRICE AED 1,049,999	
TYPE 1 BEDROOM - TYPE 03 & 04	BEDROOM 1	AREA (SQFT) Built Up: 683 - 933	PRICE AED 1,049,999	
TYPE 1 BEDROOM - TYPE 05	BEDROOM 1	AREA (SQFT) Built Up: 683 - 933	PRICE AED 1,049,999	
TYPE 2 BEDROOM - TYPE 01	BEDROOM 2	AREA (SQFT) Built Up: 1215 - 1217	PRICE AED 1,549,999	

Download the **Prosper App**

