



Reference No. PLS00108

DEVELOPER MERAAS

Architectural Masterpiece | Prime Waterfront Location | Atelis at D3

Starting from **₹ 2,100,000**

57RX+FFC Marine Transport Station, Zaa'beel Second, Dubai Design District, Dubai, United Arab Emirates [VIEW IN MAP ↗](#)

Payment Plan 20/55/25	Handover From Q3 2029	Location 57RX+FFC Marine Tr...	Property Type Apartment Penthouse	DLD Fee 4 %
---------------------------------	---------------------------------	------------------------------------------	-----------------------------------------------	-----------------------

Description:

Atelis at D3 is a premium waterfront residential development by **Meraas**, located in the dynamic **Dubai Design District (d3)**, a hub for creativity, fashion, and innovation. The tower is designed by the internationally acclaimed firm Skidmore, Owings & Merrill (SOM), featuring a distinctive architectural style inspired by a desert flower, with elegant curved balconies and a modern façade.

The development offers a refined selection of **1 to 4 bedroom apartments** along with exclusive **sky villas and penthouses**. Many residences enjoy stunning views of Dubai Creek, the Downtown skyline, and surrounding natural landscapes, creating a perfect balance between urban energy and serene waterfront living.

Residents can enjoy a wide range of lifestyle amenities, including infinity swimming pools, a fully equipped gym, wellness and spa facilities, landscaped gardens, co-working spaces, and dedicated leisure areas for families. The

Download the **Prosper App**

GET IT ON Google Play
 Download on the App Store

project is thoughtfully designed to promote indoor-outdoor living with spacious terraces and vibrant communal spaces.

Strategically located, Atelis at D3 provides seamless connectivity to key destinations such as Downtown Dubai, DIFC, and Dubai International Airport, making it an ideal choice for both end-users and investors seeking a modern, design-focused lifestyle in a prime location.

Amenities

Swimming Pool	Gym Fitness Center	Spa Sauna Steam
Kids Play Area	BBQ Area	24/7 Security & CCTV
High-speed Elevators	Smart Home Integration	Pet-friendly Zones
Supermarket / Store	Restaurants Cafés	Gardens Parks
Jogging Cycling Track	Parking	Yoga Pilates Studio
Multipurpose Hall	Pharmacy Clinic	Sports Courts
Concierge Services	Clubhouse Community Center	

Payment Plan

INSTALMENT	PERIOD	DATE	BOOKING AMOUNT %
Down Payment	Immediate	-	20
1	After Booking	31-10-2025	10
2	After Booking	28-02-2026	5

Download the Prosper App



INSTALMENT	PERIOD	DATE	BOOKING AMOUNT %
3	After Booking	31-07-2026	10
4	After Booking	31-12-2026	10
5	After Booking	31-05-2027	10
6	After Booking	30-09-2027	10
7	On Completion	-	25

Regulatory Information

Permit Number: **0437283469**

DED: **771800**

RERA: **143033**

BRN: **40659**

Trakheesi Permit:

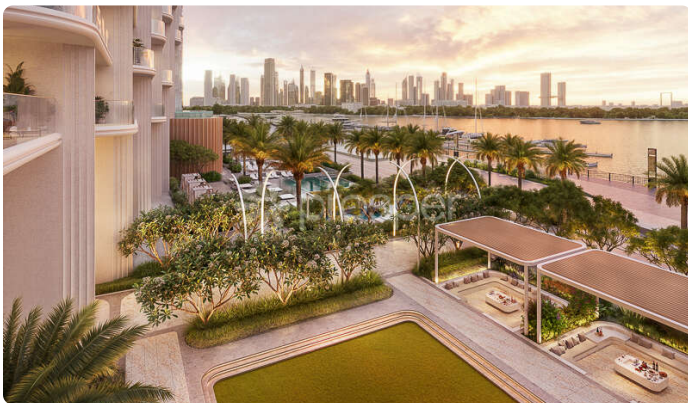
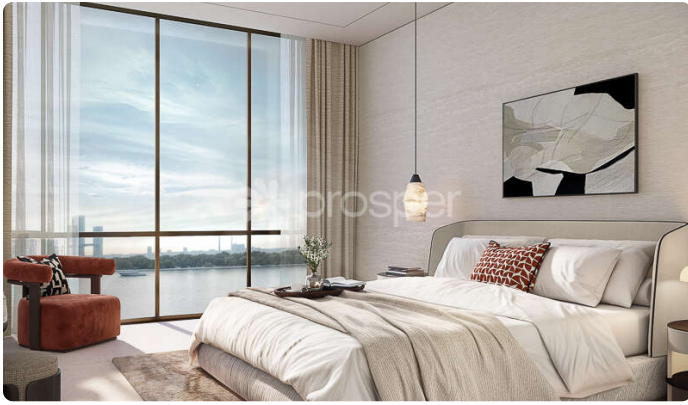


more photos



Download the Prosper App





Download the Prosper App





Unit Types



View units which comes under this project.



Apartment



TYPE	BEDROOM	AREA (SQFT)	PRICE	
1 BEDROOM - TYPE A.1/A.9/A.11	1	Built Up: 749 – 1139	₹ 2,100,000	
1 BEDROOM - TYPE D.3	1	Built Up: 749 – 1139	₹ 2,100,000	
2 BEDROOM - TYPE A.2/A.4/A.5/A.8	2	Built Up: 1341 – 2032	₹ 3,800,000	
2 BEDROOM + MAID - TYPE A.1	2	Built Up: 1618 – 1751	₹ 4,900,000	
2 BEDROOM + MAID - TYPE A.2	2	Built Up: 1618 – 1751	₹ 4,900,000	
3 BEDROOM - TYPE A.1	3	Built Up: 2124 – 2592	₹ 7,400,000	

Download the Prosper App





<p>TYPE 3 BEDROOM - TYPE B.1</p>	<p>BEDROOM 3</p>	<p>AREA (SQFT) Built Up: 2124 - 2592</p>	<p>PRICE </p> <p>7,400,000</p>	
---------------------------------------------	-----------------------------	-----------------------------------------------------	--------------------------------------------------------------------------------------------------------------------------	-------------------------------------------------------------------------------------

<p>TYPE 4 BEDROOM - TYPE A.1</p>	<p>BEDROOM 4</p>	<p>AREA (SQFT) Built Up: 2859 - 3367</p>	<p>PRICE </p> <p>10,700,000</p>	
---------------------------------------------	-----------------------------	-----------------------------------------------------	---------------------------------------------------------------------------------------------------------------------------	-------------------------------------------------------------------------------------

<p>TYPE 4 BEDROOM SKYVILLA - TYPE A (LOWER/UPPER FLOOR)</p>	<p>BEDROOM 4</p>	<p>AREA (SQFT) Built Up: 6044 - 6530</p>	<p>PRICE </p> <p>13,000,000</p>	
------------------------------------------------------------------------	-----------------------------	-----------------------------------------------------	---------------------------------------------------------------------------------------------------------------------------	-------------------------------------------------------------------------------------

Penthouse

<p>TYPE 5 BEDROOM - TYPE B (LOWER/UPPER FLOOR)</p>	<p>BEDROOM 5</p>	<p>AREA (SQFT) Built Up: 6252 - 7277</p>	<p>PRICE </p> <p>21,600,000</p>	
---------------------------------------------------------------	-----------------------------	-----------------------------------------------------	---------------------------------------------------------------------------------------------------------------------------	-------------------------------------------------------------------------------------